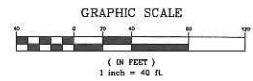
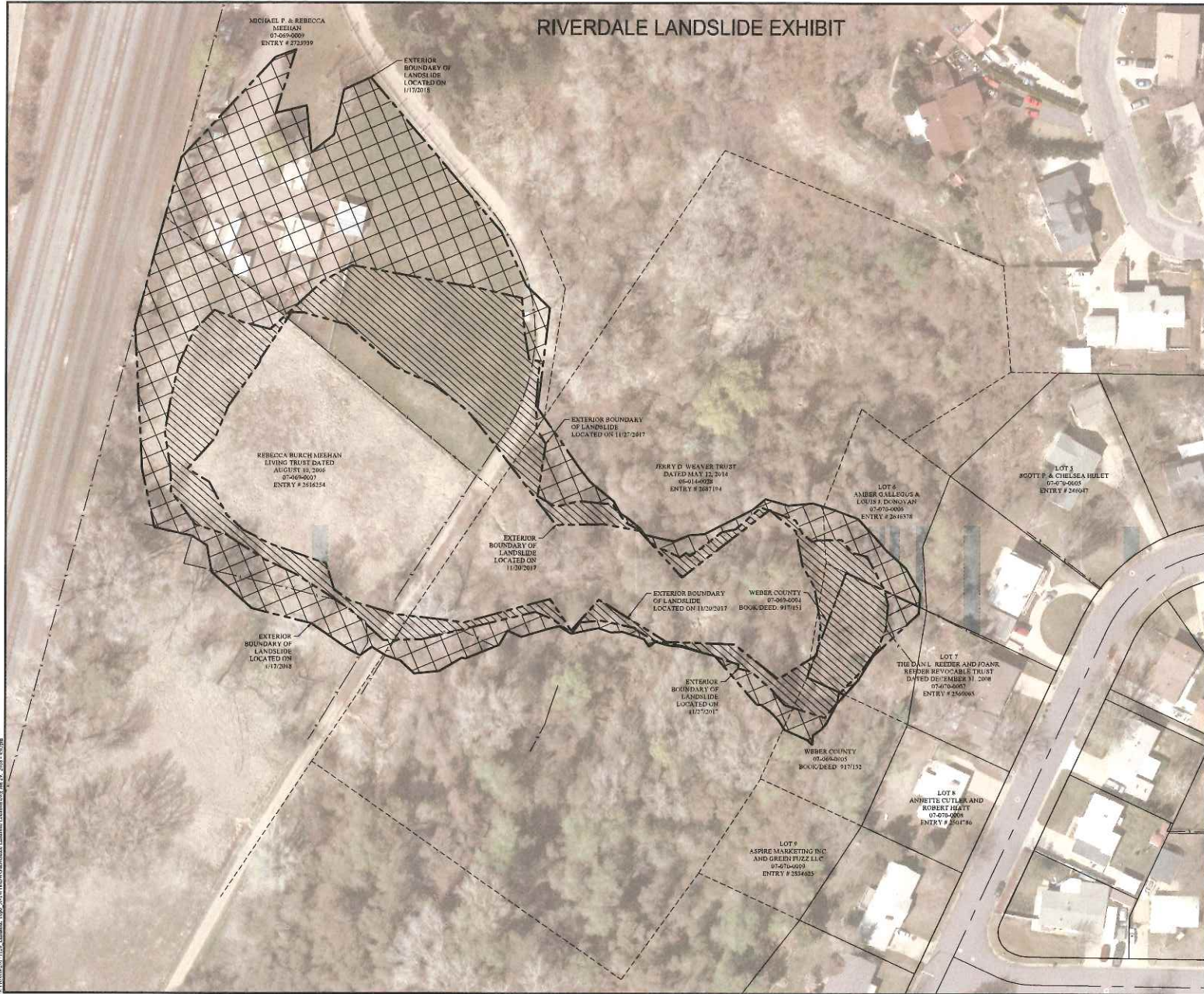


RIVERDALE LANDSLIDE EXHIBIT



LEGEND:

LANDSLIDE BOUNDARY	
DEED LINES	
FENCE LINES	
SUBDIVISION LINE	
CENTERLINE	
DIFFERENCE IN LANDSLIDE FROM 11/20/17/27 -46,574 SQ. FT.	
DIFFERENCE IN LANDSLIDE FROM 11/27/17-1/17/18 -74,629 SQ. FT.	

THE BOUNDARY OF LANDSLIDE IS ACTIVELY MOVING. THIS MAP REPRESENTS THE EXTENTS OF THE LANDSLIDE FROM DATA COLLECTED ON THREE SEPARATE OCCASIONS.

THIS MAP IS FOR EXHIBIT PURPOSES ONLY. NO BOUNDARY WORK WAS PERFORMED IN THE CREATION OF THIS MAP.

TOTAL AFFECTED AREA 198,020 SQ. FT. OR 4.55 ACRES

- 07-069-0007 CONTAINS 69,022 SQ. FT. OR 1.59 ACRES OF THE AFFECTED AREA (34.9%)
- 07-069-0009 CONTAINS 67,904 SQ. FT. OR 1.56 ACRES OF THE AFFECTED AREA (34.3%)
- 06-014-0028 CONTAINS 49,349 SQ. FT. OR 1.13 ACRES OF THE AFFECTED AREA (24.9%)
- 07-069-0004 CONTAINS 1,000 SQ. FT. OR 0.02 ACRES OF THE AFFECTED AREA (0.5%)
- 07-070-0006 CONTAINS 3,573 SQ. FT. OR 0.08 ACRES OF THE AFFECTED AREA (1.8%)
- 07-069-0005 CONTAINS 1,667 SQ. FT. OR 0.04 ACRES OF THE AFFECTED AREA (0.8%)
- 07-076-0007 CONTAINS 5,505 SQ. FT. OR 0.13 ACRES OF THE AFFECTED AREA (2.8%)

RIVERDALE LANDSLIDE



2390 Washington Blvd. Rm 200
 Ogden, Utah 84401
 PHONE: (801) 393-8000
 FAX: (801) 393-8316

SURVEYED BY: DM, DW		DRAWN BY: BK	
CHECKED BY: JA		FILED SURVEY NUMBER:	
REVISIONS			
NO.	DATE	BY	REVISION
1	11/20/17	DM	UPDATE BASE AND ADDED TYPICAL SLIDE BOUNDARY
2	01/02/2018	BK	UPDATED BASE AND ADDED TYPICAL SLIDE BOUNDARY